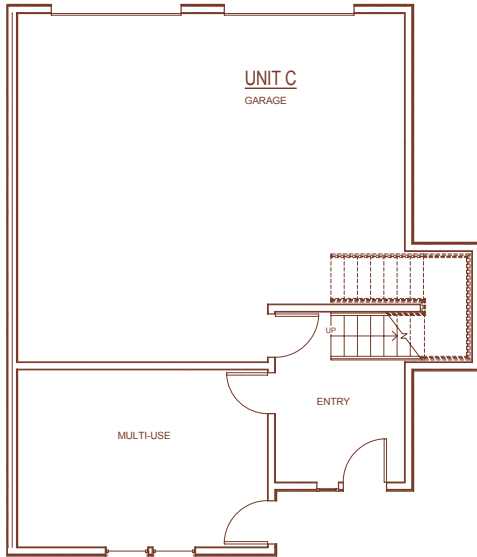
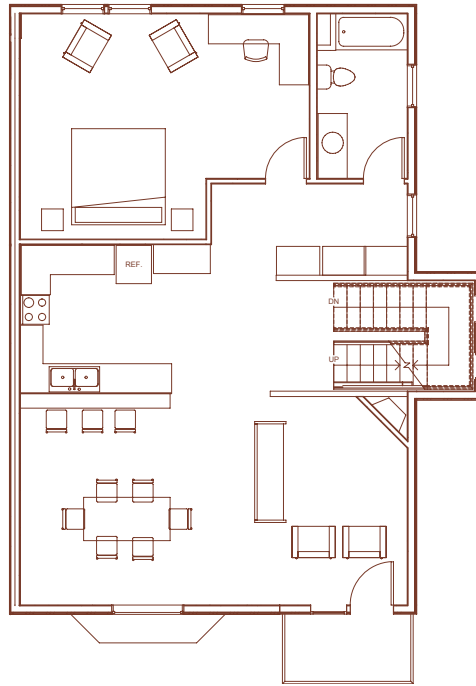


# MULTIPLEX C UNIT - 3 BEDROOM

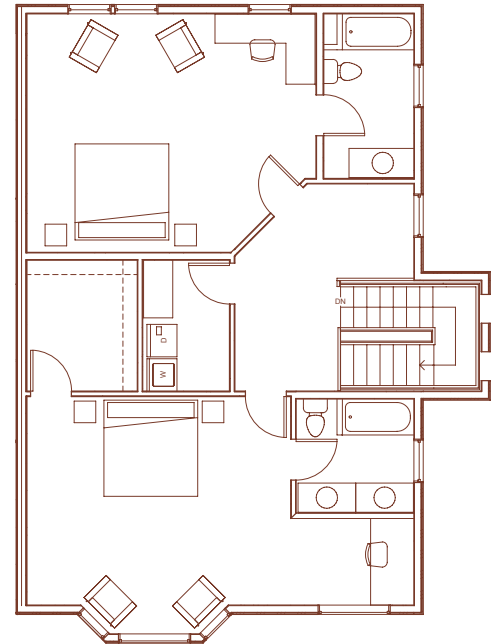
Approximately 3,400 s.f. three-story, spacious three bedrooms with three full baths, 1/2 bath on ground level, one fireplace in the living room & one fireplace in each of the second level bedrooms, deck off living room & another off one of the bedrooms, bay window in master bedroom, laundry hook ups, study/office area, vaulted ceiling in living room, covered porch front entry, two car garage, and additional ~280 s.f. of flexible space on first level. (Also has elevator add on option).



Ground Level: 1051 sq. ft.



Second Level: 1204 sq. ft.



Third Level: 1222 sq. ft.

## Homeport Amenities

- Access to Kenai River via Kenai Landing
- Community Nature Trails
- Limited Common Area Parking
- Community Water and Waste System
- Paved Streets
- Heated Garages with High Ceilings
- Rental Pool Available through Kenai Landing
- Private Outdoor Decks
- Home Occupation Space at Street Level
- Adjacent to Historic Kenai Landing
- Custom Options Available
- Forced Air Heat
- Solid Form Countertops
- Fully Sprinklered
- Hard Wood Floors
- Tiled Entries
- Bay Window
- Spacious Kitchens

PLEASE NOTE: The enclosed materials are reproduced from artist renderings. All measurements shown are approximate. Location, size and existence of doors, windows, walls, fireplaces, and any other items depicted may vary depending on exterior preference or choice of options. Prices, plans, benefits and locations are subject to change without notice. Modifications as well as price changes, may be made without notice. Therefore, please consult the sales agent for latest information.

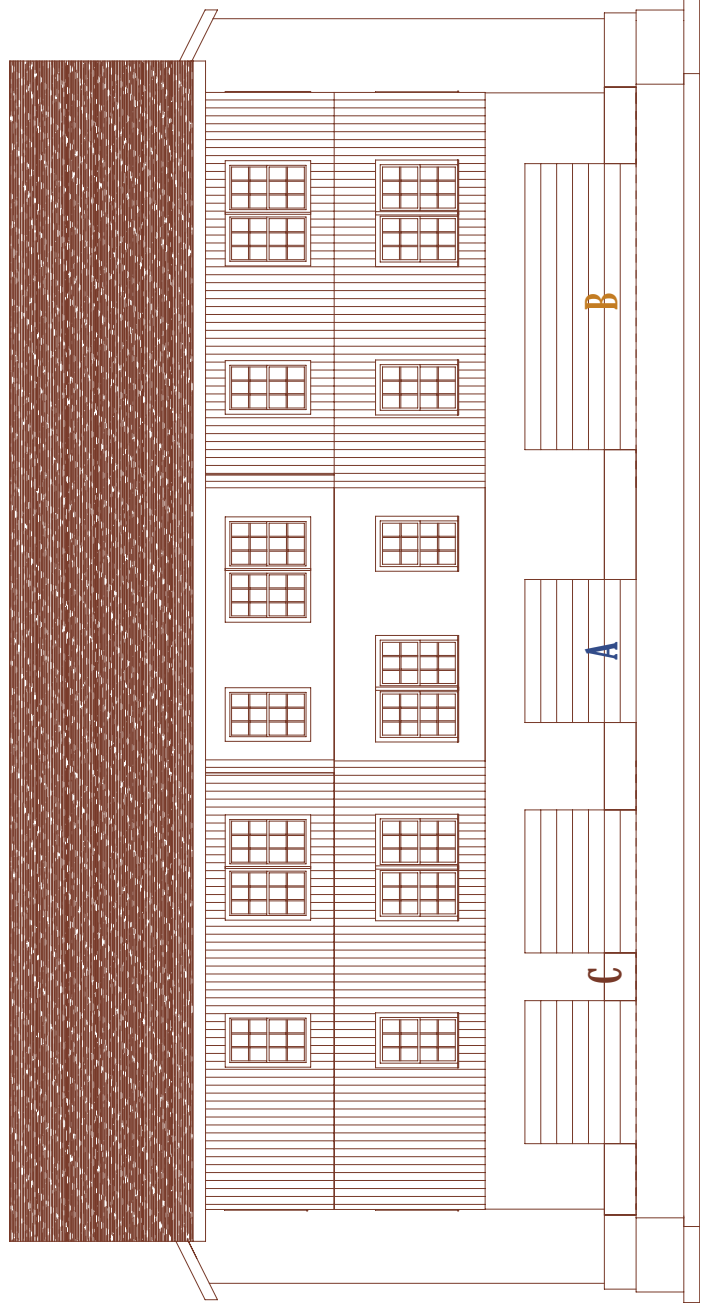


Contact: Lea Miner - (907) 299-4210  
Jon Faulkner - (907) 399-3410

# MULTIPLEX EXTERIOR



EXTERIOR FRONT ELEVATION



EXTERIOR REAR ELEVATION