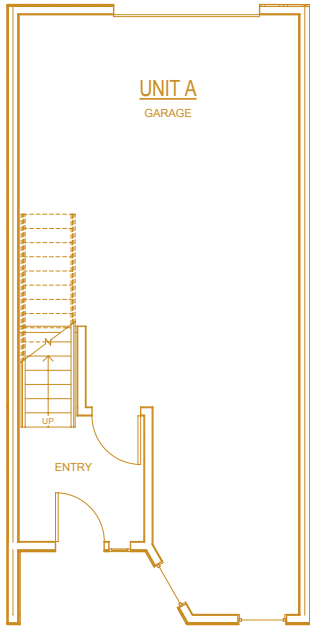
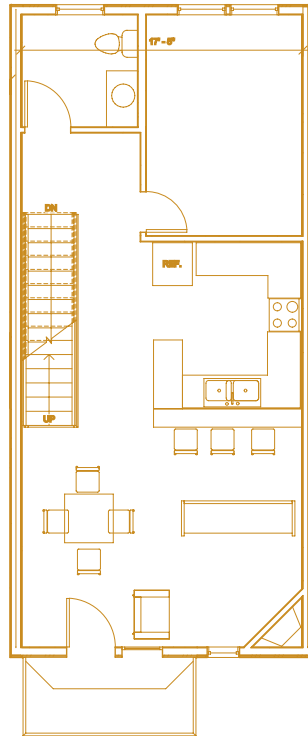


MULTIPLEX A UNIT - 2 BEDROOM

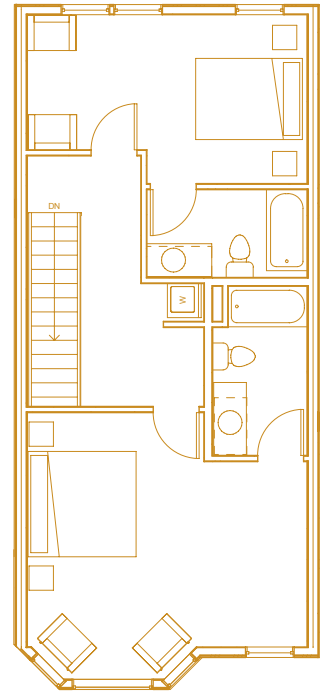
Approximately 2,170 s.f., three-story, spacious two bedrooms with one full bath & one 3/4 bath, additional 1/2 bath on second level, fireplace in the living room, deck off living room & another off the second bedroom, laundry hook-ups, study/office/den area, bay window in master bedroom, covered porch front entry, one-car garage, and additional ~200 s.f. of flexible space on first level.



Ground Level: 641 sq. ft.



Second Level: 720 sq. ft.



Third Level: 737 sq. ft.

Homeport Amenities

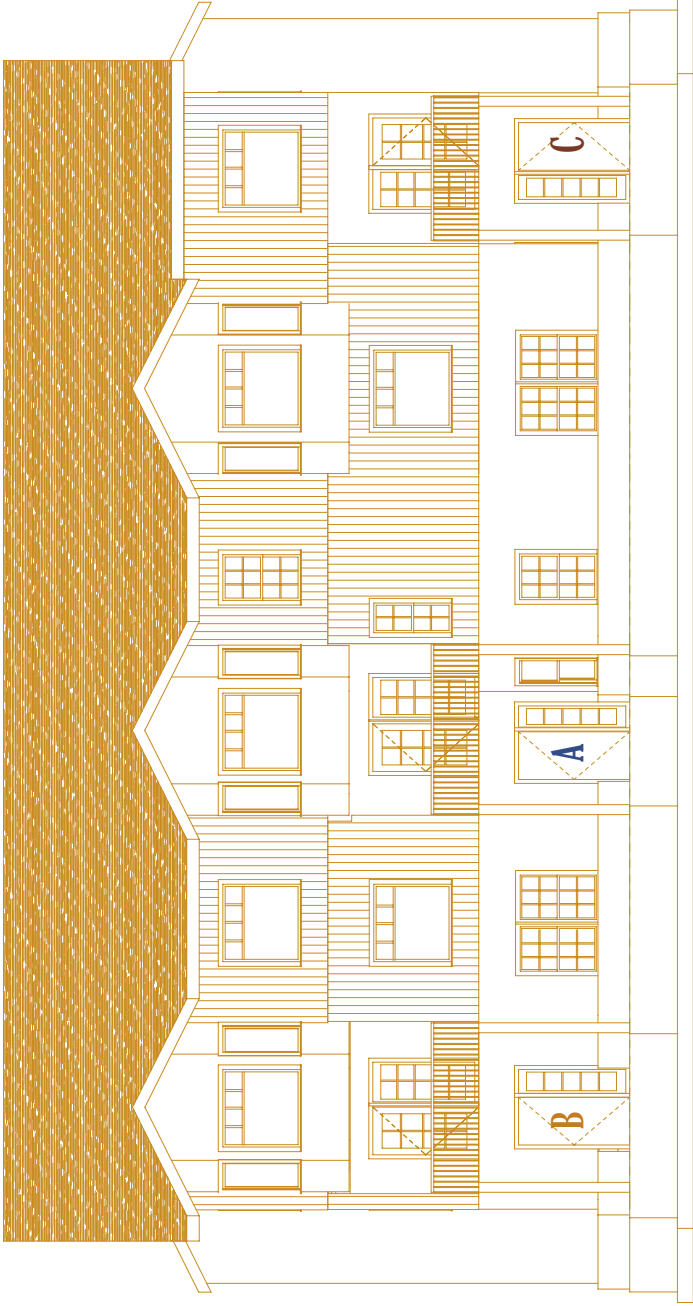
- Access to Kenai River via Kenai Landing
- Community Nature Trails
- Limited Common Area Parking
- Community Water and Waste System
- Paved Streets
- Heated Garages with High Ceilings
- Rental Pool Available through Kenai Landing
- Private Outdoor Decks
- Home Occupation Space at Street Level
- Adjacent to Historic Kenai Landing
- Custom Options Available
- Forced Air Heat
- Solid Form Countertops
- Fully Sprinklered
- Hard Wood Floors
- Tiled Entries
- Bay Window
- Spacious Kitchens

PLEASE NOTE: The enclosed materials are reproduced from artist renderings. All measurements shown are approximate. Location, size and existence of doors, windows, walls, fireplaces, and any other items depicted may vary depending on exterior preference or choice of options. Prices, plans, benefits and locations are subject to change without notice. Modifications as well as price changes, may be made without notice. Therefore, please consult the sales agent for latest information.

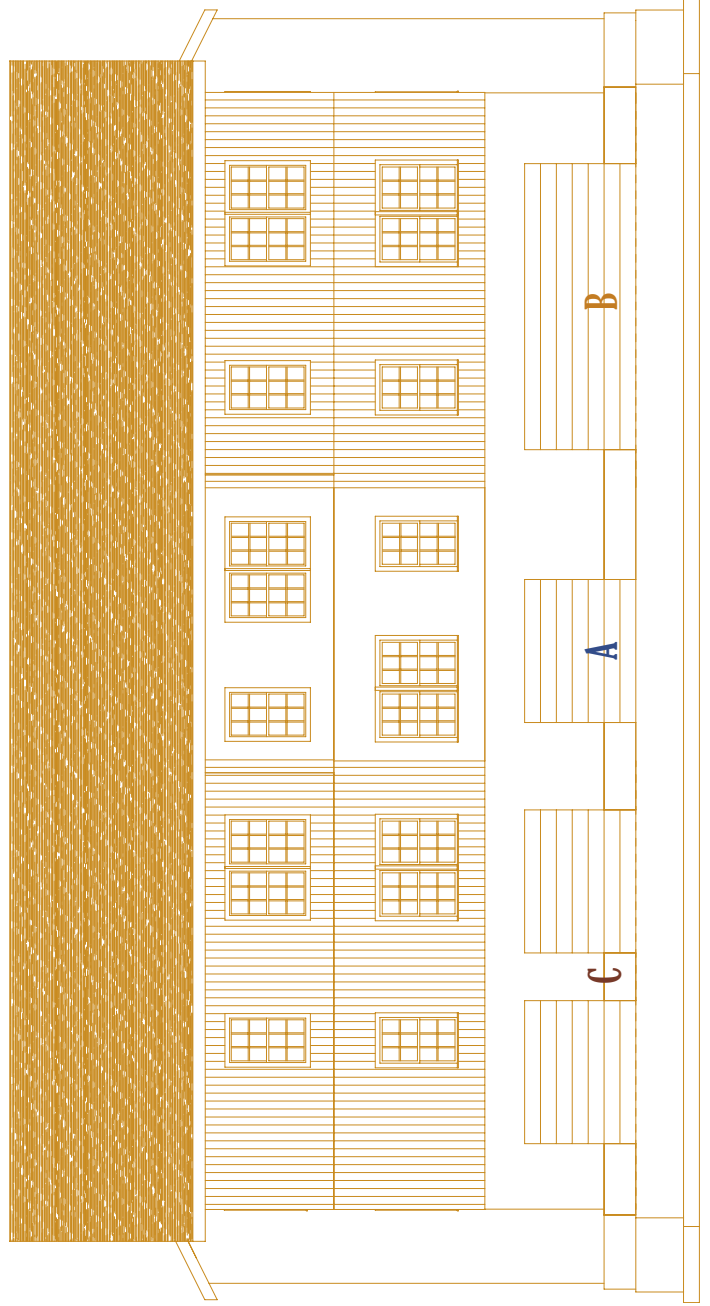


Contact: Lea Miner - (907) 299-4210
Jon Faulkner - (907) 399-3410

MULTIPLEX EXTERIOR



EXTERIOR FRONT ELEVATION



EXTERIOR REAR ELEVATION