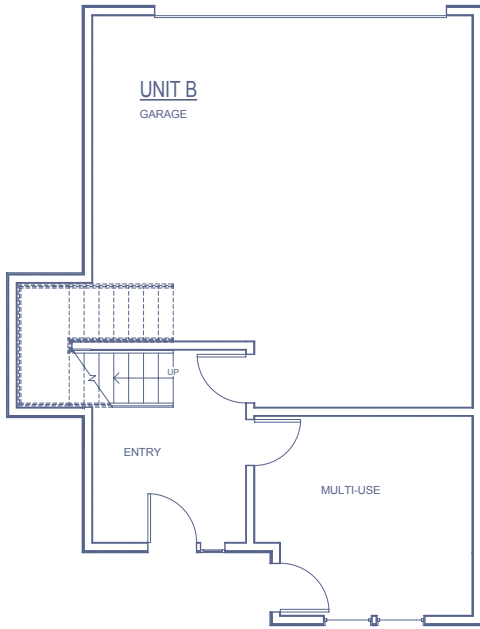
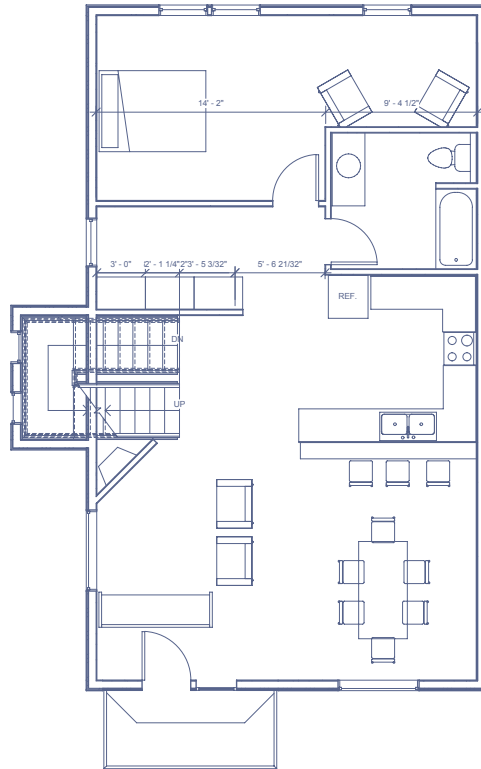


MULTIPLEX B UNIT - 3 BEDROOM

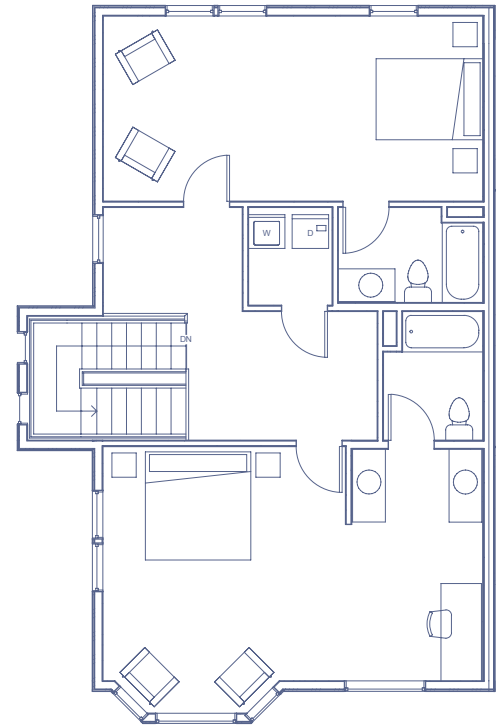
Approximately 2,950 s.f., three-story, spacious three bedrooms with three full baths, 1/2 bath on ground level, one fireplace in the living room & one fireplace in the master bedroom, deck off living room & another off one of the bedrooms, bay window in master bedroom, laundry hook ups, study/office area, plenty of natural light, covered porch front entry, two-car garage, and additional ~210 s.f. of flexible space on first level. (Also has elevator add on option).



Ground Level: 911 sq. ft.



Second Level: 1061 sq. ft.



Third Level: 1079 sq. ft.

Homeport Amenities

- Access to Kenai River via Kenai Landing
- Community Nature Trails
- Limited Common Area Parking
- Community Water and Waste System
- Paved Streets
- Heated Garages with High Ceilings

- Rental Pool Available through Kenai Landing
- Private Outdoor Decks
- Home Occupation Space at Street Level
- Adjacent to Historic Kenai Landing
- Custom Options Available
- Forced Air Heat

- Solid Form Countertops
- Fully Sprinklered
- Hard Wood Floors
- Tiled Entries
- Bay Window
- Spacious Kitchens

PLEASE NOTE: The enclosed materials are reproduced from artist renderings. All measurements shown are approximate. Location, size and existence of doors, windows, walls, fireplaces, and any other items depicted may vary depending on exterior preference or choice of options. Prices, plans, benefits and locations are subject to change without notice. Modifications as well as price changes, may be made without notice. Therefore, please consult the sales agent for latest information.

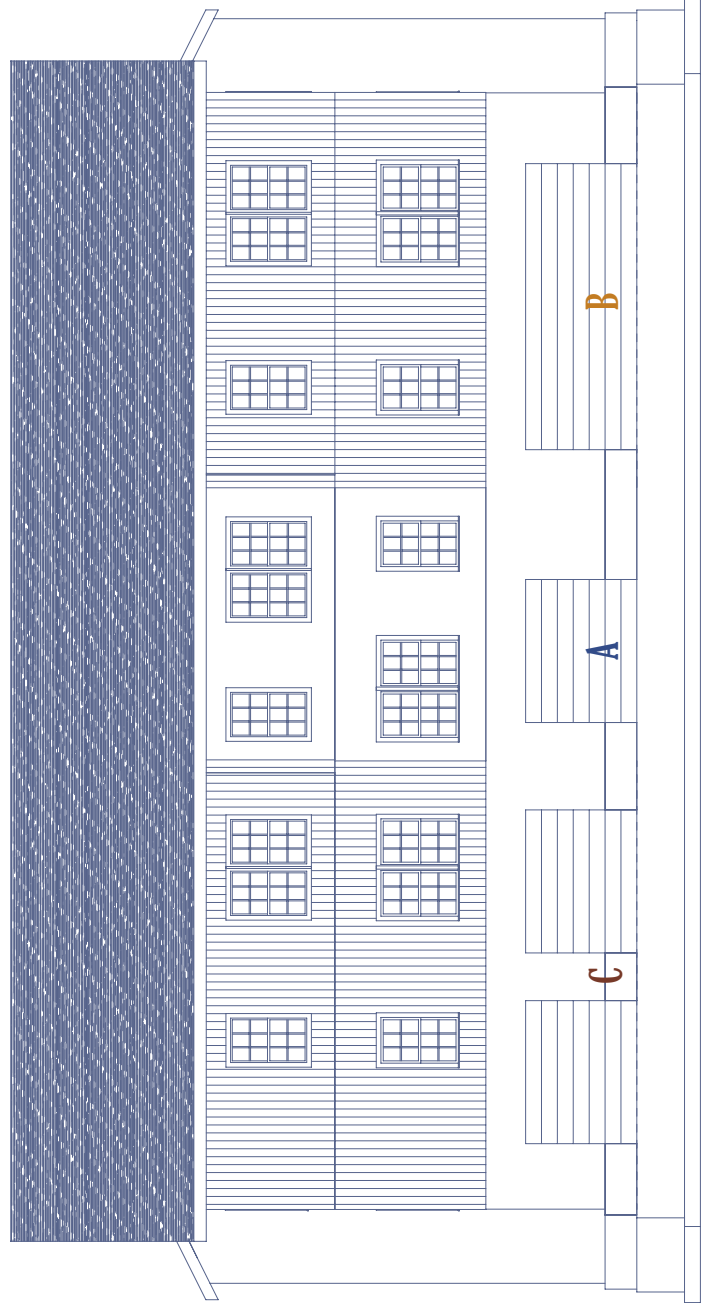


Contact: Lea Miner - (907) 299-4210
Jon Faulkner - (907) 399-3410

MULTIPLEX EXTERIOR



EXTERIOR FRONT ELEVATION



EXTERIOR REAR ELEVATION